

Global Energy Policy Research | GEPR

GEPR
<http://agorajp.com/>
???

IPCC AR6 Working Group II Contribution to the Sixth Assessment Report of the Intergovernmental Panel on Climate Change

15 May 2022

IPCC AR6 Working Group II Contribution to the Sixth Assessment Report of the Intergovernmental Panel on Climate Change

Working Group II Contribution to the Sixth Assessment Report of the Intergovernmental Panel on Climate Change



isil terzioglu/iStock

IPCC AR6 Working Group II Contribution to the Sixth Assessment Report of the Intergovernmental Panel on Climate Change

IPCC AR6 Working Group II Contribution to the Sixth Assessment Report of the Intergovernmental Panel on Climate Change

IPCC AR6 Working Group II Contribution to the Sixth Assessment Report of the Intergovernmental Panel on Climate Change

????????14??????ECS)?11??ECS?13??ECS????????????

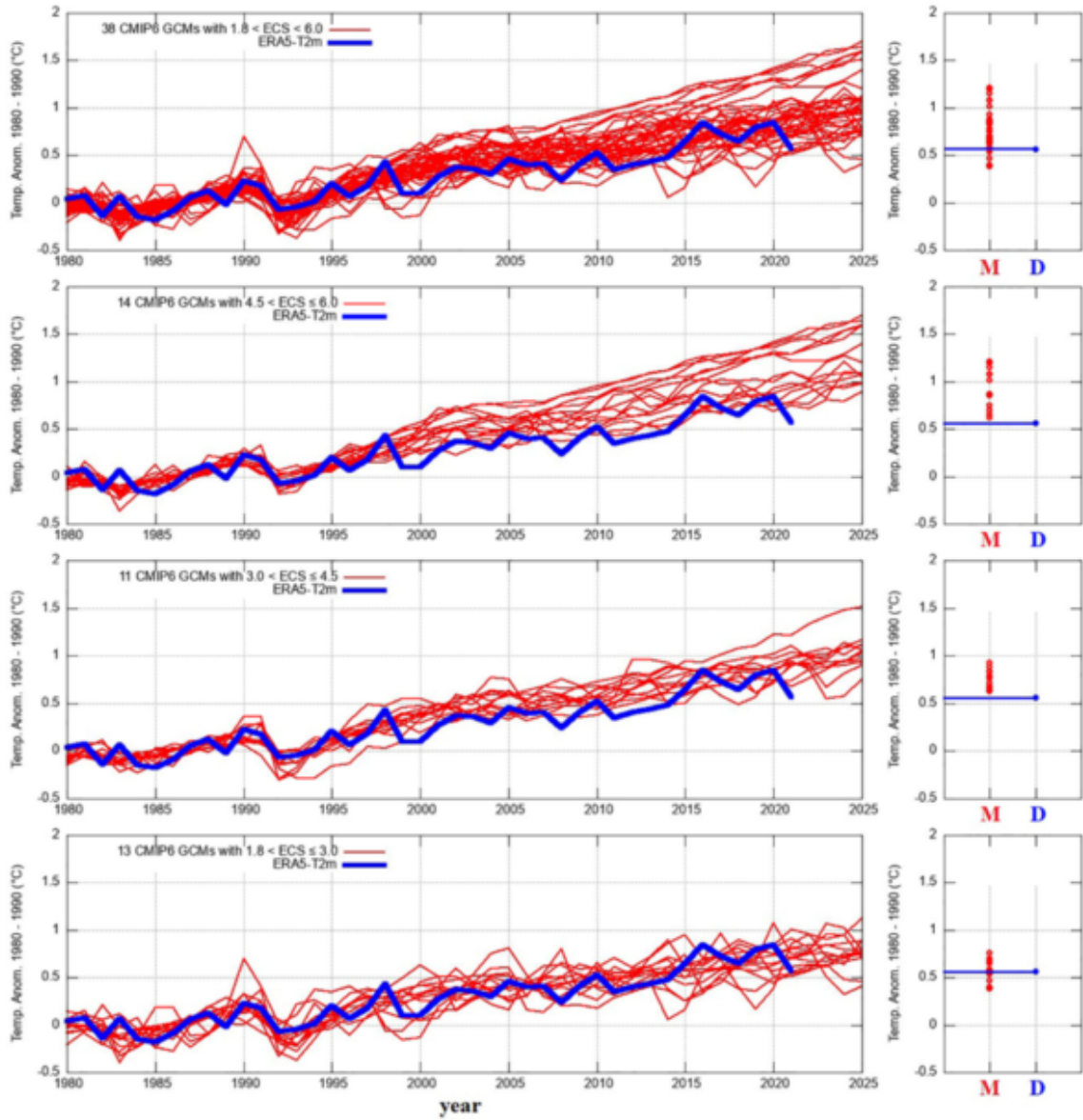


Figure 1. Left: Global surface temperature simulations (red) against ERA5-T2m (blue). Right: modeled (M, red) and observed (D, blue, $\Delta T \approx 0.56^\circ\text{C}$) mean global surface warming 2011–2021 (1980–1990 anomalies).

???????ECS?GCM???????????ECS??ECS?GCM????????????????

?4??
????????????????????

?4(?)????????????????????????????????????81%??
?t < t0?????????????????????t > t0???

??

??

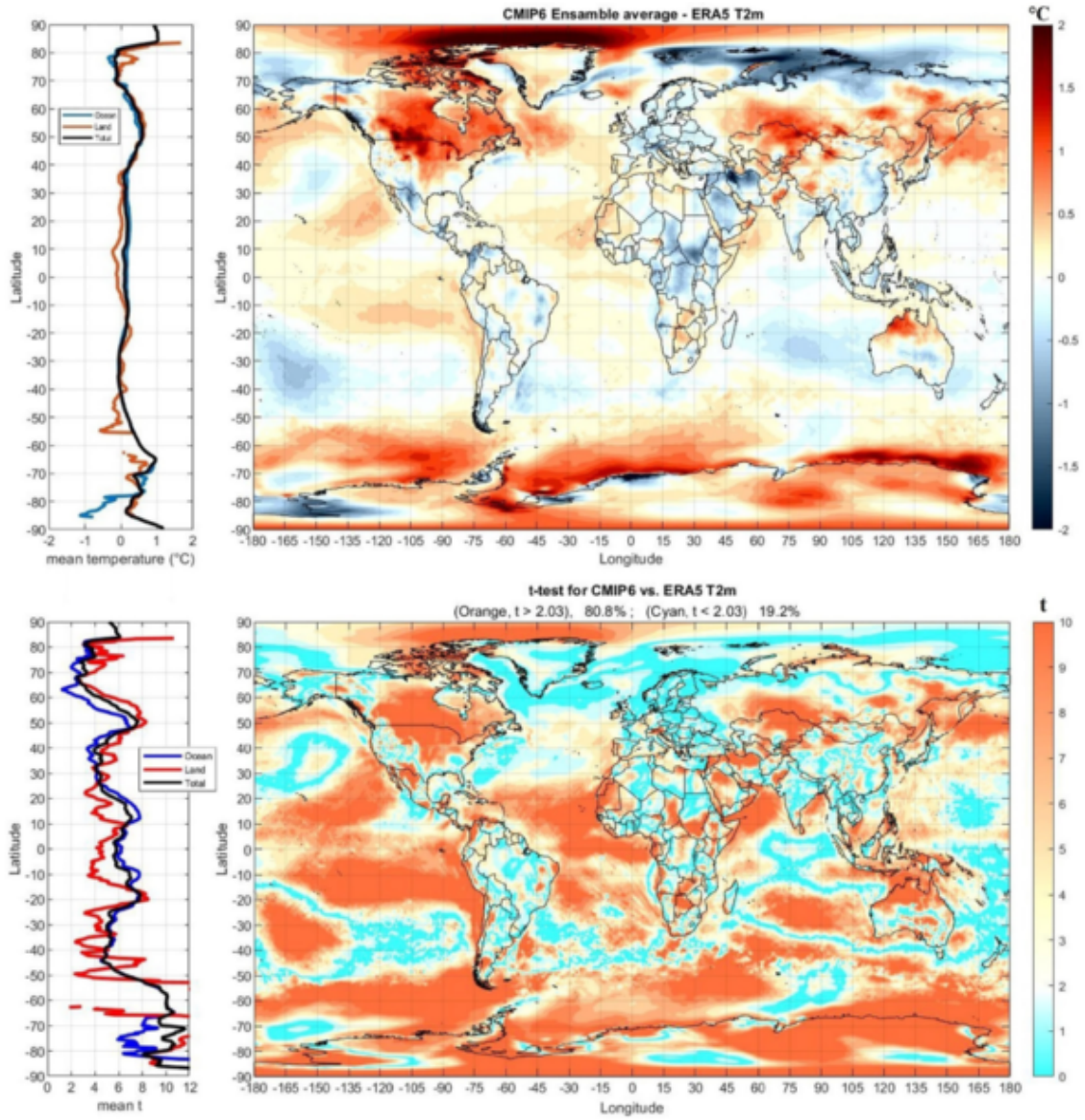


Figure 4. (Top) Differences between the global circulation models ensemble average tsa and ERA5-T2m (Equation 1). (Bottom) Spatial t-statistics between the 38 models and ERA5-T2m (Equation 2). Model-data compatibility (at the confidence level of 5%) occurs in the cyan color areas ($t < t_0 = 2.03$) while yellow-red areas indicate statistical incompatibility ($t > t_0 = 2.03$). Left-panels: relative latitudinal profiles.

55% GCM ERA5-T2m ECS

ECS GCM

ECS GCM

81%

ECS GCM 81% ECS GCM 60%

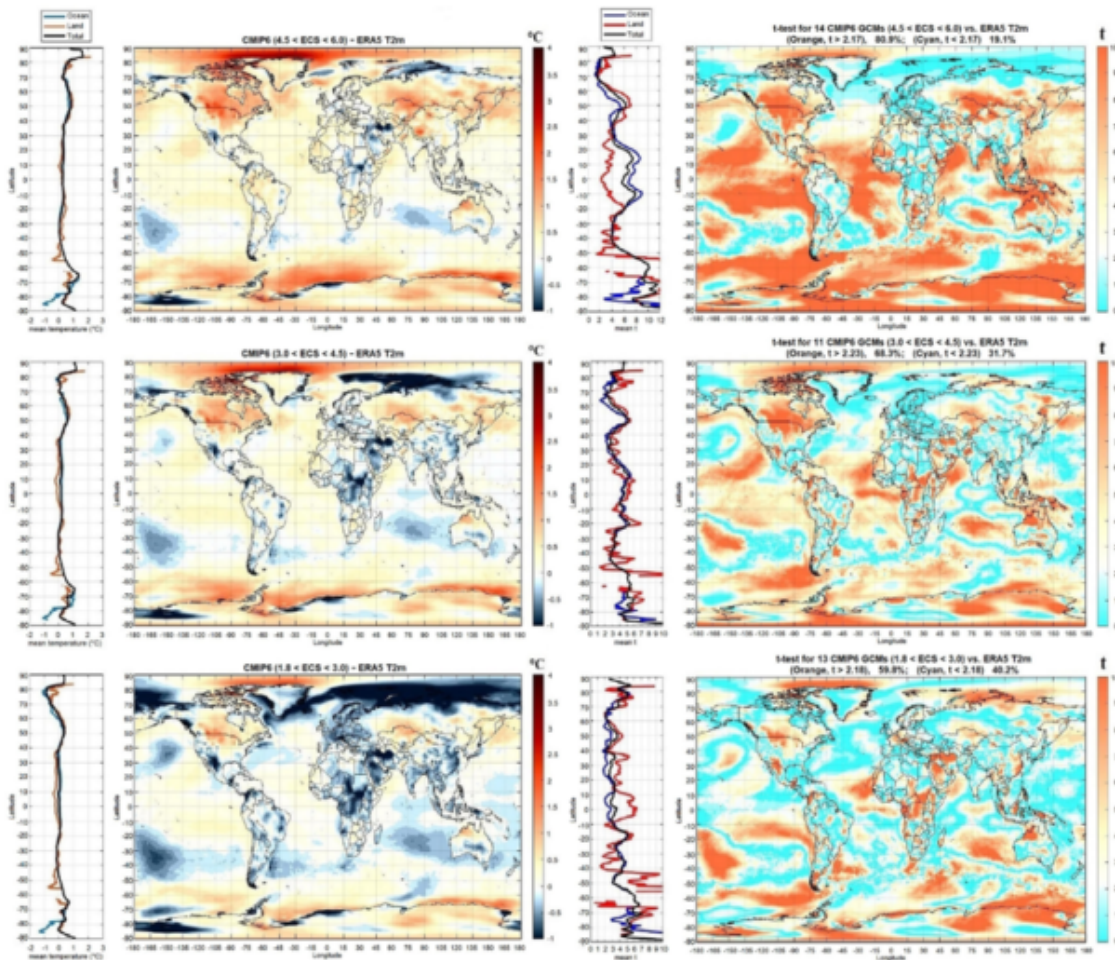


Figure 5. (Left) Differences between the high, medium and low-equilibrium climate sensitivity (ECS) global circulation models (GCM) ensemble average tsa and ERA5-T2m (Equation 1). (Right) Spatial t-statistics between high, medium and low-ECS GCMs and ERA5-T2m (Equation 2). Left-panels: relative latitudinal profiles. Model-data compatibility (at the confidence level of 5%) occurs in the cyan color areas ($t < t_0$) while yellow-red areas indicate statistical incompatibility ($t > t_0$).

????????????????

1. ?????????ECS?ECS????????????????????ECS????????????RCP8.5????
2050?????????
2. ?ECS??
????????????????????

?

1??

??????

- ?IPCC????????????????
- ?IPCC????????????????
- ?IPCC????????????????
- ?IPCC????????????CO2????
- ?IPCC????????????????
- ?IPCC????????????????
- ?IPCC????????????????
- ?IPCC????????????????
- ?IPCC????????????????
- ?IPCC????????????????

?



This entry was posted on Saturday, May 7th, 2022 at 7:00 am and is filed under [???](#), [?????](#)

You can follow any responses to this entry through the [Comments \(RSS\)](#) feed. Both comments and pings are currently closed.

