

FIGURE 2. MONTHLY AVERAGE PRICE INDEX OF RESIDENTIAL ELECTRICITY BY REGION, 2007-2014 (2010 = 100)

????????????????????????????4??15%????????????????????????????

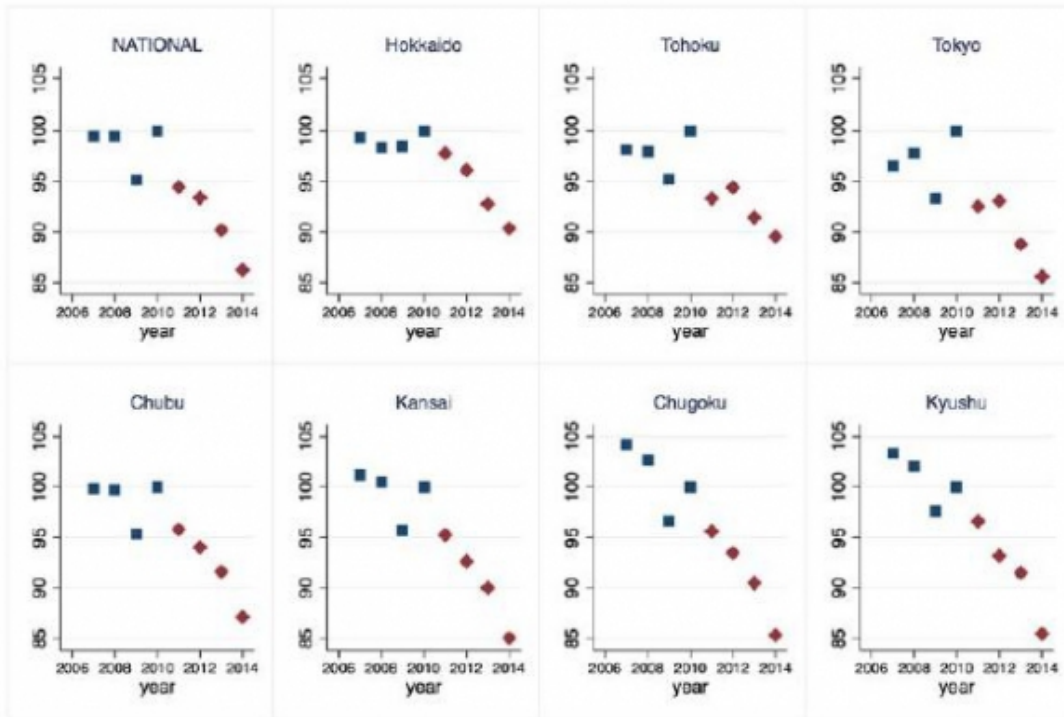


FIGURE 4. ANNUAL AVERAGE RESIDENTIAL ELECTRICITY CONSUMPTION PER CAPITA BY REGION, 2007-2014 (2010 = 100)

0.01

1683

This entry was posted on Tuesday, December 3rd, 2019 at 5:00 pm and is filed under ... You can follow any responses to this entry through the Comments (RSS) feed. Both comments and pings are currently closed.

