

Global Energy Policy Research | GEPR

GEPR <http://agorajp.com/>

????????????????

?? ?? - Monday, August 31st, 2015

?????????IEEI?

????????????????

????????????????

?????EPA????????8?3????????CO2??2030??2005??32?????Cle
an Power Plan????????

????????????????2????????3????????2022?????
?????EPA????????????

????CO2????CO2????3?1????4????CO2????2????
????2025????2005??26?28????

U.S. GREENHOUSE GAS POLLUTION INCLUDES:



CARBON DIOXIDE (CO2), 82%

Enters the atmosphere through burning fossil fuels (coal, natural gas, and oil), solid waste, trees and wood products, and also as a result of certain chemical reactions (e.g., manufacture of cement)



FLUORINATED GASES, 3%

Hydrofluorocarbons, perfluorocarbons, and sulfur hexafluoride are synthetic, powerful greenhouse gases that are emitted from a variety of industrial processes.

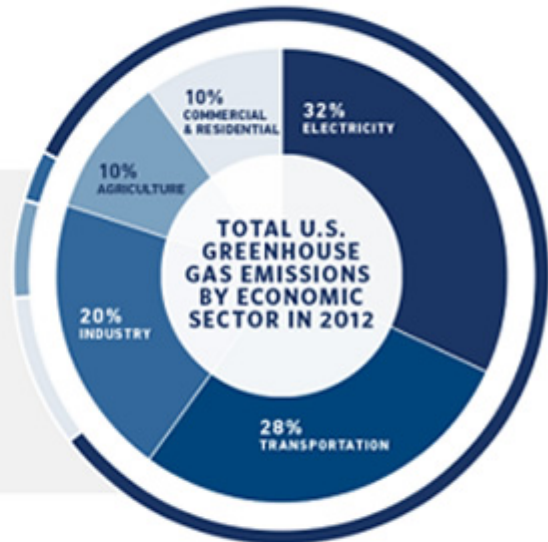
NITROUS OXIDE (N2O), 6%

Emitted during agricultural and industrial activities, as well as during combustion of fossil fuels and solid waste.

METHANE (CH4), 9%

Emitted during the production and transport of coal, natural gas, and oil as well as from landfills.

SOURCE: EPA



????????HP??2012????????????????????
????32% ???????28??????20??????

EPA??2009??
????????CO2????????2030????????90% ???????72% ?????????3600????????9????????????
????????30??

????????????EPA????????????430??
????????????

??6????????????????????????????

????????6?29??2012?3??EPA(????)?????MATS?Mercury and Air Toxics Standard??
??

EPA????????????????????SO2??2012?3??
MATS????????????20??96????????????

????????????2014?6??CO2????????????
??

????????????compliance cost consideration????????????????????????Clean Air Act??CO2?????
????????????????????EPA?“?”????????????????????????

????EPA??
??EPA????????????????????MATS?Mercury and Air Toxics Standard????????????????????????????????????

??

??
??

??21????????COP21????????????????????????????????????
??11????????????????????????????

?2015?8?31????

This entry was posted on Monday, August 31st, 2015 at 12:00 pm and is filed under [?????](#), [???](#)
You can follow any responses to this entry through the [Comments \(RSS\)](#) feed. Responses are currently closed, but you can [trackback](#) from your own site.